



Burke
COLLECTION

Mannington®
COMMERCIAL

2025

STOCKING PROGRAM

This catalogue showcases our curated selection of Mannington Burke flooring products and color options currently in stock and readily available. Each item listed is prepared for prompt pickup or delivery to meet your project timelines.



12 Commerce Rd
Fairfield, NJ 07004
973.887.3700

125 Carolyn Blvd
Farmingdale, NY 11735
631.249.2525

2053 High Ridge Rd
Boynton Beach, FL 33426
561.296.7467

[ACFGARDNER.COM](https://www.acfgardner.com)



COLOR KEY

Burke
COLLECTION

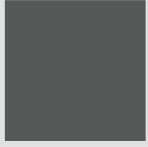
Mannington®
COMMERCIAL



701 BLACK



217 CHARCOAL



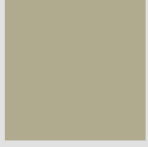
660 ROCKY



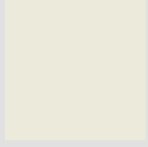
204 GREY



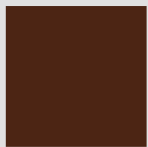
208 LIGHT GREY



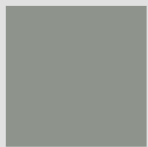
209 GREY BEIGE



403 ALMOND



502 BROWN



117 PLATINUM METALLIC



523 BLACK BROWN



206 LIGHT BEIGE



150 NOUGAT



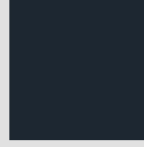
508 TWEED



597 MOCHA



130 PAISLEY



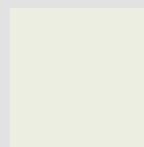
875 NAVY



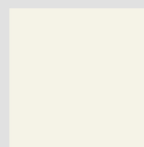
401 WHITE



173 SILVER SCREEN



137 PEARL



400 NATURAL



2053 High Ridge Rd,
Boynton Beach, FL 33426
561.296.7467

125 Carolyn Blvd
Farmingdale, NY 11735
631.249.2525

12 Commerce Rd
Fairfield, NJ 07004
973.887.3700



WALL BASE

Burke
COLLECTION

Mannington®
COMMERCIAL



*100 LINEAR FEET PER BOX

TYPE TV VINYL

WALL BASE

4" - 1/8" GAUGE LENGTHS



IN STOCK COLORS: 701, 217, 660, 204, 502, 208, 401
209, 403, 875, 206, 508, 150, 130, 523, 597

6" - 1/8" GAUGE LENGTHS

● ● IN STOCK COLORS: 701, 660

4" - 1/8" GAUGE COILS

● ● IN STOCK COLORS: 701, 660

6" - 1/8" GAUGE COILS

● ● IN STOCK COLORS: 701, 660



STANDARD
TOE BASE



*MORE COLORS AVAILABLE ON SPECIAL ORDER



2053 High Ridge Rd,
Boynton Beach, FL 33426
561.296.7467

125 Carolyn Blvd
Farmingdale, NY 11735
631.249.2525

12 Commerce Rd
Fairfield, NJ 07004
973.887.3700



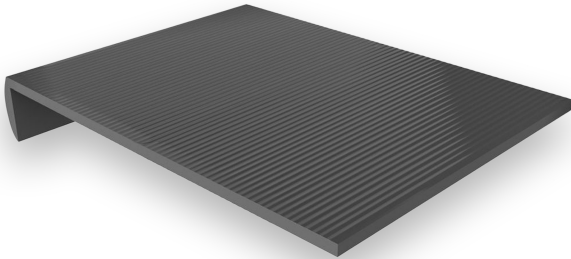
TREADS

Burke
COLLECTION

Mannington®
COMMERCIAL

LINEAR STAIR TREAD COMMERCIAL 150

TYPE TV (VINYL)



*AVAILABLE IN ROUND NOSE & SQUARE NOSE;
SPECIAL ORDER COLORS ALSO AVAILABLE

MBST150R701-48

Round Nose Vinyl Stair Tread

● ● IN STOCK COLORS: 701, 660
TREAD LENGTH: 48"

MBST150R701-72

Round Nose Vinyl Stair Tread

● ● IN STOCK COLORS: 701, 660
TREAD LENGTH: 72"

MBST150S701-48

Square Nose Vinyl Stair Tread

● ● IN STOCK COLORS: 701, 660
TREAD LENGTH: 48"

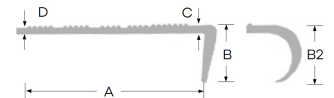
MBST150S701-72

Square Nose Vinyl Stair Tread

● ● IN STOCK COLORS: 701, 660
TREAD LENGTH: 72"

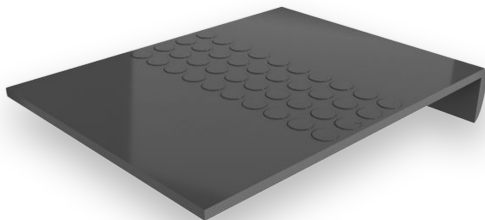
STAIR TREAD DIMENSIONS:

A = 12"; B = 1.5"; B2 = 1.5"; C = .15"; D = .125"



COLORSPEC® STAIR TREAD

TYPE TS (RUBBER)



*SPECIAL ORDER COLORS ALSO AVAILABLE

MBSTTS701-48 TREAD LENGTH: 48"

Square Nose Rubber Stair Tread

● ● IN STOCK COLORS: 701, 660

MBSTTS701-72 TREAD LENGTH: 72"

Square Nose Rubber Stair Tread

● ● IN STOCK COLORS: 701, 660



2053 High Ridge Rd,
Boynton Beach, FL 33426
561.296.7467

125 Carolyn Blvd
Farmingdale, NY 11735
631.249.2525

12 Commerce Rd
Fairfield, NJ 07004
973.887.3700

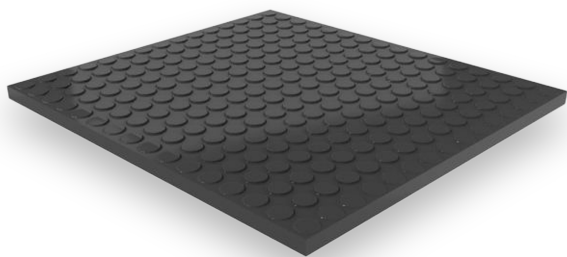


TILES

Burke
COLLECTION

Mannington®
COMMERCIAL

COLORSCAPE® RUBBER TILE (PVC-FREE)



HOMOGENEOUS THERMOSET
RUBBER TILES

CONSTRUCTION: Thermoset Rubber Tile
CLASSIFICATION: ASTM F1344 Class I, Type A
TOTAL THICKNESS: 1/8" (3.175 mm)
PROFILE: Circle
SIZE: 18.125" x 18.125"
FINISH: Matte
PACKAGING: 45.62 sq ft/carton
(20 Tiles per carton)
IN STOCK COLORS: 701, 660 ● ●



*MORE COLORS AVAILABLE ON SPECIAL ORDER



2053 High Ridge Rd,
Boynton Beach, FL 33426
561.296.7467

125 Carolyn Blvd
Farmingdale, NY 11735
631.249.2525

12 Commerce Rd
Fairfield, NJ 07004
973.887.3700

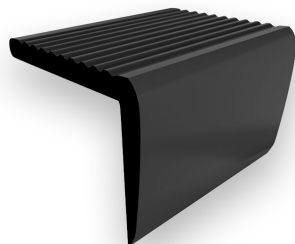


STAIR NOSE

Burke
COLLECTION

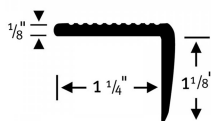
Mannington®
COMMERCIAL

510 TOP-SET NOSING (SQUARE NOSE)

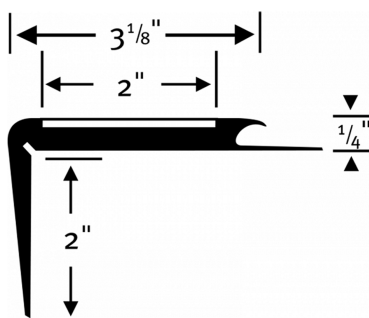


Covers leading edge of step.
May be used over vinyl
& sheet goods

● ● **IN STOCK COLORS:** 701, 660



558 VISUAL ABRASIVE SAFETY NOSING

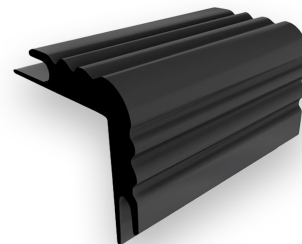


Contrasting insert for Visually
Impaired. Accepts 1/4" with lip.

*10 interchangeable abrasive strip
colors available for
special order.

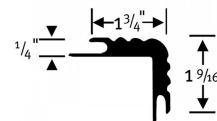
● **IN STOCK COLORS:** 701

565 DOUBLE UNDERCUT CARPET NOSING

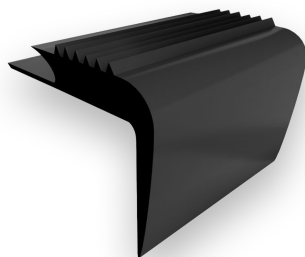


For 1/4" and 5/16" carpet.
Accommodates step & riser;
with ribbed surface

● **IN STOCK COLORS:** 701

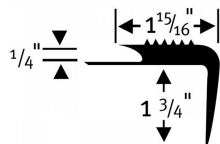


570 SUPERIOR CARPET STAIR NOSING

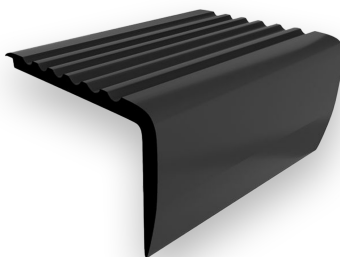


Friction-Grip nosing for use
when only step is covered.
Undercut for 1/4" and 5/16" carpet.

● ● **IN STOCK COLORS:** 701, 660

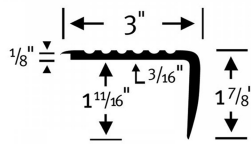


575 OVERLAP STAIR NOSING

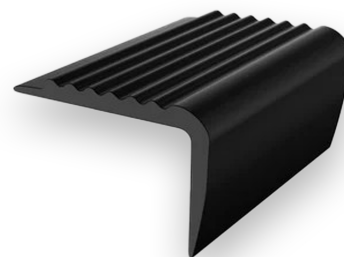


Nosing with deep grooves and
overlap lip. Accepts material to 1/8"
with lip, to 3/16" without lip.

● ● **IN STOCK COLORS:** 701, 660

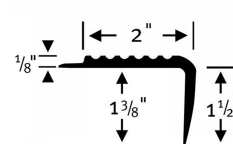


580 COMMERCIAL STEP NOSING



Square step nosing
for 1/8" material.
Ribbed surface.

● ● **IN STOCK COLORS:** 701, 660



2053 High Ridge Rd,
Boynton Beach, FL 33426
561.296.7467

125 Carolyn Blvd
Farmingdale, NY 11735
631.249.2525

12 Commerce Rd
Fairfield, NJ 07004
973.887.3700

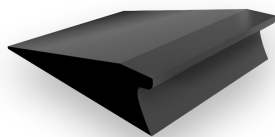


REDUCERS

Burke
COLLECTION

Mannington®
COMMERCIAL

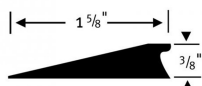
146 UNIVERSAL REDUCER



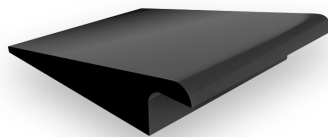
Reduces 3/8" materials to 0".
1 5/8" transition.

Packing: 10-12' secs;
120 lin ft/ctn

● IN STOCK COLORS: 701



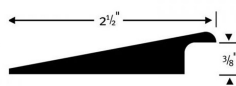
147 OVERLAP REDUCER



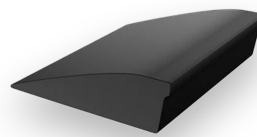
Overlaps 3/8" multi-purpose resilient flooring or carpet.
2 1/2" transition.

Packing: 10-12' secs;
120 lin ft/ctn

● IN STOCK COLORS: 701



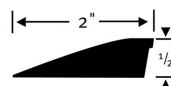
160 UNIVERSAL REDUCER



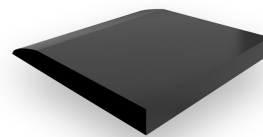
Edge reducer for 1/2" materials.
2" transition.

Packing: 10-12' secs;
120 lin ft/ctn

● IN STOCK COLORS: 701



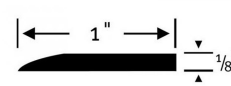
633 TILE REDUCER



Butts to reduce gauge of resilient to 0".
1" x 36" x 1/8".

Packing: 50-3' secs;
or 2-100' coils

● IN STOCK COLORS: 701



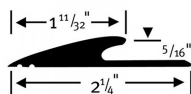
700 IMPERIAL REDUCER



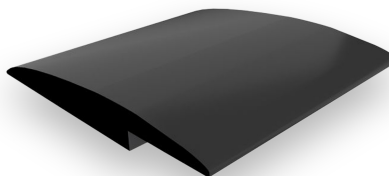
1 11/32" transition reducer.
For glue-down carpet; 5/16" undercut.
Can be trimmed to butt to tile.

Packing: 20-12' secs; 240 lin ft/ctn

IN STOCK COLORS: 701, 660, 502



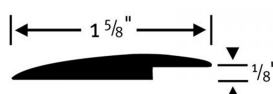
735 UNDERSLUNG REDUCER



Binder-bar edging for 1/16" - 1/8" resilient floors.
(DRY-BACK)

Packing: 2-35' coils; 70 lin ft/ctn

IN STOCK COLORS: 701, 660, 502



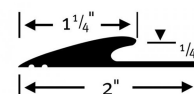
800 IMPERIAL REDUCER



1 1/4" transition reducer.
For glue-down carpet; 1/4" undercut.
Can be trimmed to butt to tile.

Packing: 20-12' secs; 240 lin ft/ctn

IN STOCK COLORS: 701, 660, 502



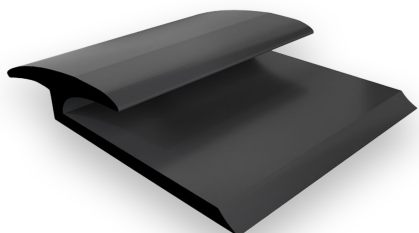
2053 High Ridge Rd,
Boynton Beach, FL 33426
561.296.7467

125 Carolyn Blvd
Farmingdale, NY 11735
631.249.2525

12 Commerce Rd
Fairfield, NJ 07004
973.887.3700



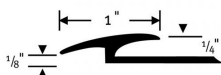
150 TILE-CARPET JOINER



One-piece molding.
Joins 1/4" carpet to 1/8" tile.

Packing: 25-12' secs; 300 lin ft/ctn

● ● ● **IN STOCK COLORS:** 701, 660, 502



152 CARPET TO RESILIENT TRANSITION



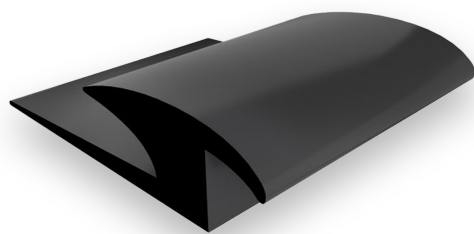
Transitions 1/4" to 5/16" glue-down carpet
to 1/16" to 1/8" resilient.

Packing: 20-12' secs; 240 lin ft/ctn

● ● ● **IN STOCK COLORS:** 701, 660, 502



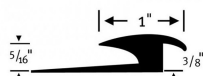
153 CERCO BAR 3/8"



One-piece molding for joining 5/16" carpet
to 3/8" ceramic materials.

Packing: 20-12' secs; 240 lin ft/ctn

● **IN STOCK COLORS:** 701



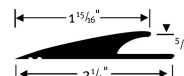
705 SUPER IMPERAL REDUCER



1 15/16" heavy duty transition reducer. For glue-down
carpet; 5/16" undercut. Can be trimmed to butt to tile.

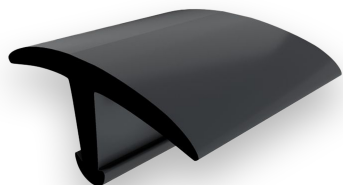
Packing: 10-12' secs; 120 lin ft/ctn

● **IN STOCK COLORS:** 701





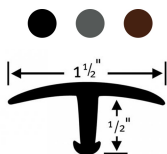
360 CERCO T MOLDING



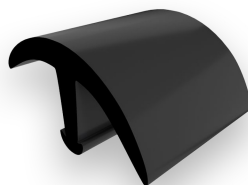
Snap-in T molding. Joins 1/2" material. Uses metal track only.

Packing: 20-12' secs; 240 lin ft/ctn

IN STOCK COLORS: 701, 660, 502



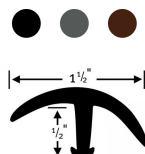
365 CERCO EDGE T MOLDING



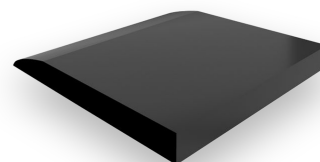
Joins 1/2" material to lesser-gauge material. Uses metal track only.

Packing: 20-12' secs; 240 lin ft/ctn

IN STOCK COLORS: 701, 660, 502



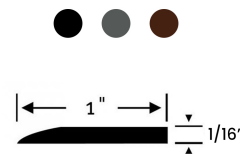
630 TILE REDUCER 1/16"



Butts to reduce gauge of resilient to 0". 1" x 36" x 1/16"

Packing: 50-3' secs; 2-100' coils

IN STOCK COLORS: 701, 660, 502



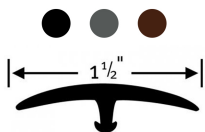
930 SNAP-DOWN T MOLDING



Snap-in T molding. Joins 1/4" to 5/16" material on each side. Uses metal track only.

Packing: 20-12' secs; 240 lin ft/ctn

IN STOCK COLORS: 701, 660, 502



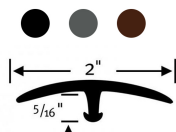
935 SUPER 2" T MOLDING



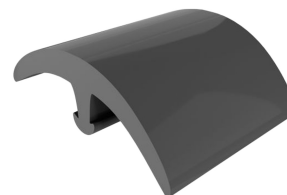
Snap-in T molding. Joins 1/4" to 5/16" material on each side. Uses metal track only.

Packing: 20-12' secs; 240 lin ft/ctn

IN STOCK COLORS: 701, 660, 502



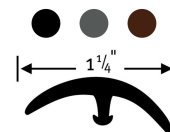
940 STANDARD EDGE T MOLDING



Joins 1/4" to lesser-gauge. 1 1/8" wide; 1/4" leg. Uses metal track only.

Packing: 20-12' secs; 240 lin ft/ctn

IN STOCK COLORS: 701, 660, 502

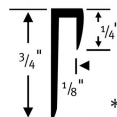




390 SQUARE CAP

Cap for 1/8" covered sheet vinyl.

Packing: 50-12' secs;
600 lin ft/ctn



IN STOCK COLORS:

● ● 701, 660

*Special order colors available.



022 CARPET COVE CAP

Cap for 1/8" covered sheet vinyl.

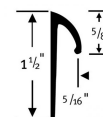
Packing: 50-12' secs;
600 lin ft/ctn



IN STOCK COLORS:

● ● 701, 660

*Special order colors available.



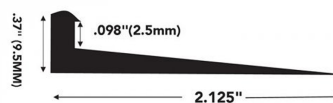
720 FUSION STRIP TRANSITION



Compact mixed flooring reducer
provides transition from 2.5 mm to 9.5 mm.

Packing: 25 pieces of 12 ft secs; 300 lin ft/ctn

● ● ● **IN STOCK COLORS:** 701, 660, 117



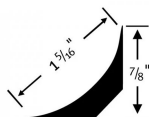


070 COVE STICK (FLEXIBLE)

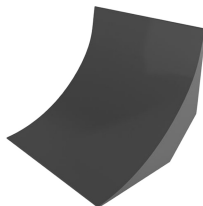


Quarter-round. Supports sheet goods for coving.
Forms 1" radius at 90° installation.
Packing: 5-20' coils; 100 lin ft/ctn

○ IN STOCK COLORS: 401

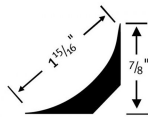


075 COVE STICK (SEMI-RIGID)

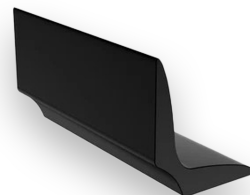


Quarter-round. Supports sheet goods for coving.
Forms 1" radius at 90° installation.
Packing: 100-5' secs; 500 lin ft/ctn

○ IN STOCK COLORS: 400

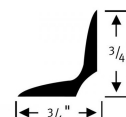


655 UTILITY MOLDING

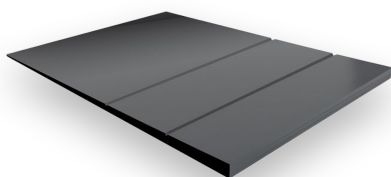


3/4" Reducer.
Finish molding for inside any right angle.
Packing: 25-5' secs; 125 lin ft/ctn

○ IN STOCK COLORS: 401

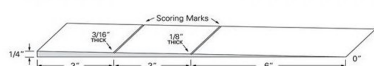


190 SUBFLOOR TRANSITION

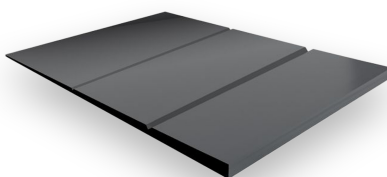


Butts to reduce from 1/4" to 0" in a 12" wide span. All can be cut at scoreline to reducer height.
Packing: 10-4' secs; 40 lin ft/ctn

● IN STOCK COLORS: 701

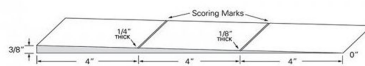


191 SUBFLOOR TRANSITION

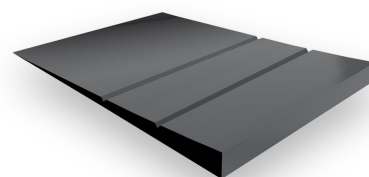


Butts to reduce from 3/8" to 0" in a 12" wide span. All can be cut at scoreline to reducer height.
Packing: 5-4' secs; 20 lin ft/ctn

● IN STOCK COLORS: 701



192 SUBFLOOR TRANSITION



Butts to reduce from 1/2" to 0" in a 12" wide span. All can be cut at scoreline to reducer height.
Packing: 5-4' secs; 20 lin ft/ctn

● IN STOCK COLORS: 701

