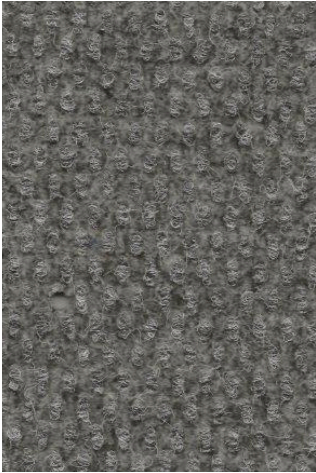
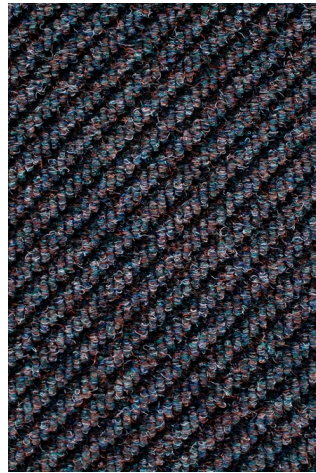


COMMERCIAL ENTRANCE TILE

20x20



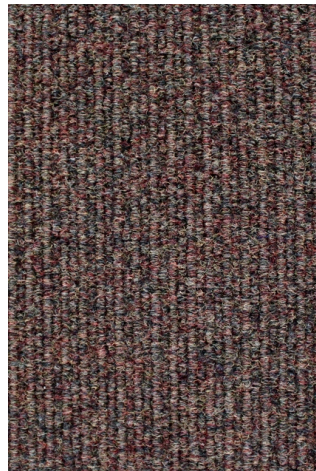
Earth Tile
Steel Grey
SPDT-ET2225
81.6 SY / 734 SF



Protector Plus
Carbon
SPDT-PP470
147.6 SY / 1328 SF



Fire Tile
Winter Grey
SPDT-FT2225
57.6 SY / 518 SF



Mega Tile
Tundra
SPDT-MT923
28.8 SY / 259 SF

COMMERCIAL ENTRANCE MATS

3' x 5' & 6' x 4"



**Duronop
Tobacco
SPD-DU-97
3' x 5' 6 pcs
6'7" x 330**



**Duronop
Beige
SPD-DU-153
13'.2" x 277
3' x 5' 11 pcs
6'7" x 29**



**Duronop
Steel
SPD-DU-531
13'2" x 405
3' x 5' 12 pcs
6'7" x 362**



**Duronop
Red
SPD-DU-353
13'2" x 220
3' x 5' 4 pcs
6' x 4' 3 pcs**

First come, First serve
subject to prior sale